



ROUTE 5 CORRIDOR STUDY

PREPARED FOR:



Richmond Regional
Planning District Commission

PREPARED BY:



Kimley-Horn
and Associates, Inc.

JULY 2010



ROUTE 5 CORRIDOR STUDY

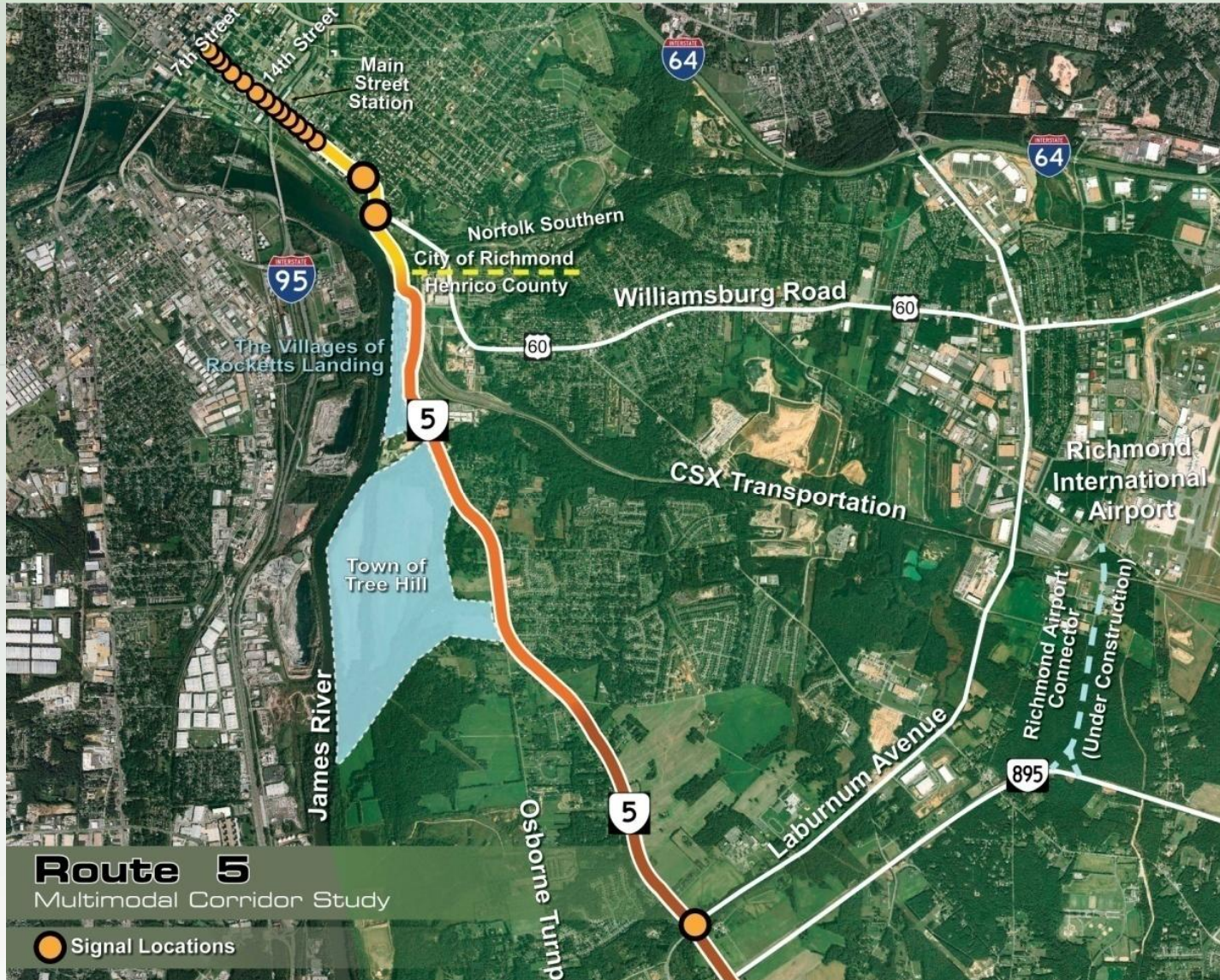
Welcome to the Route 5 Multimodal Corridor Study 1st Public Meeting

- Study Overview
- Study Objectives
- Schedule
- Existing Conditions
- Why You Are Here
- Providing Your Input



ROUTE 5 CORRIDOR STUDY

Corridor Study Area





ROUTE 5 CORRIDOR STUDY

Overall Study Objectives

- Identify existing transportation concerns
- Address increases in travel (by all modes)
- Enhance safety for all modes of transportation
- Develop a consensus-based preferred scenario
- Identify short-, mid, and long-term recommendations to address all modes of transportation
- Coordinate with adopted plans/study efforts for the City of Richmond and Henrico County
- Establish a future vision for the corridor



ROUTE 5 CORRIDOR STUDY

Overall Study Objectives

The Study will not address...

- Engineering design of the corridor or intersections
- Site layout for private properties fronting the corridor
- Updates to County and City zoning and land use plan



ROUTE 5 CORRIDOR STUDY

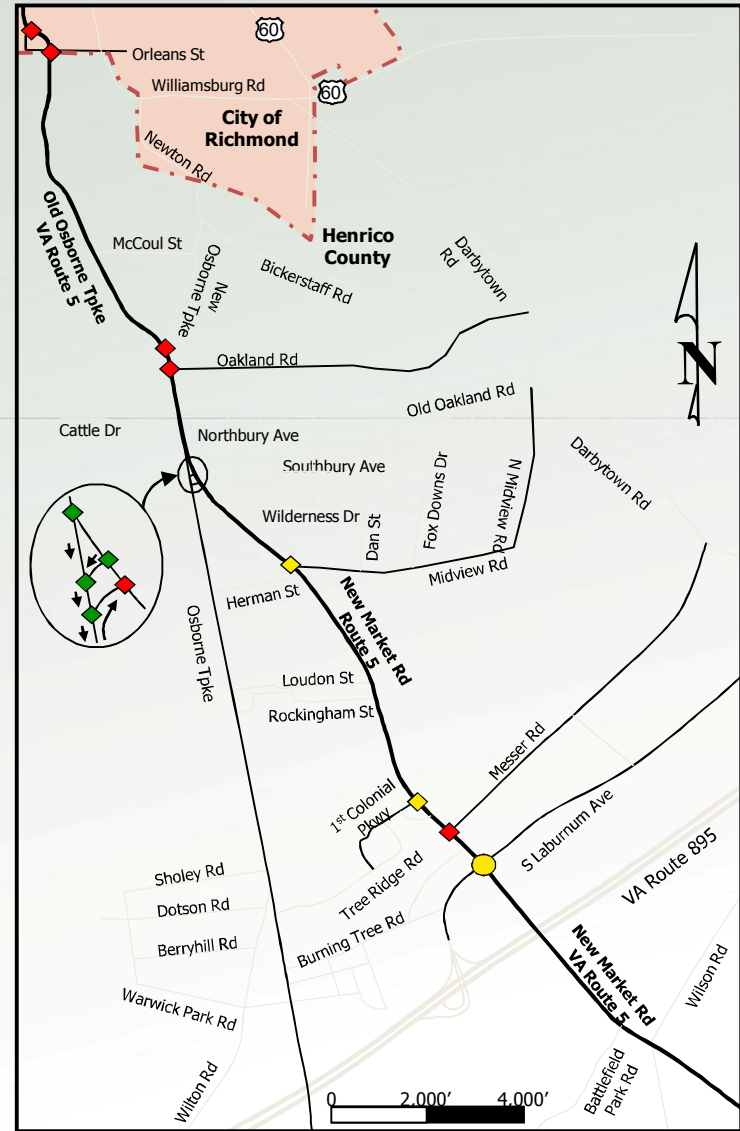
Project Schedule

Task	Month															
	2010							2011								
	June	July	August	September	October	November	December	January	February	March	April	May	June	July	August	September
Public Involvement	Red	Red	Red	Red	Red	Red	Red	Red	Red	Red	Yellow Star	Red	Yellow Star	Red	Red	Red
Data Collection	Green	Green	Green													
Existing Conditions		Brown	Brown	Brown												
Modeling				Purple	Purple	Purple	Purple	Purple	Purple	Yellow						
Transportation Needs						Dark Blue	Dark Blue	Dark Blue	Dark Blue							
Concept									Dark Green	Dark Green	Dark Green	Dark Green				
Evaluation												Red	Red	Red		
Draft / Final Report													Teal	Teal	Teal	Teal



ROUTE 5 CORRIDOR STUDY

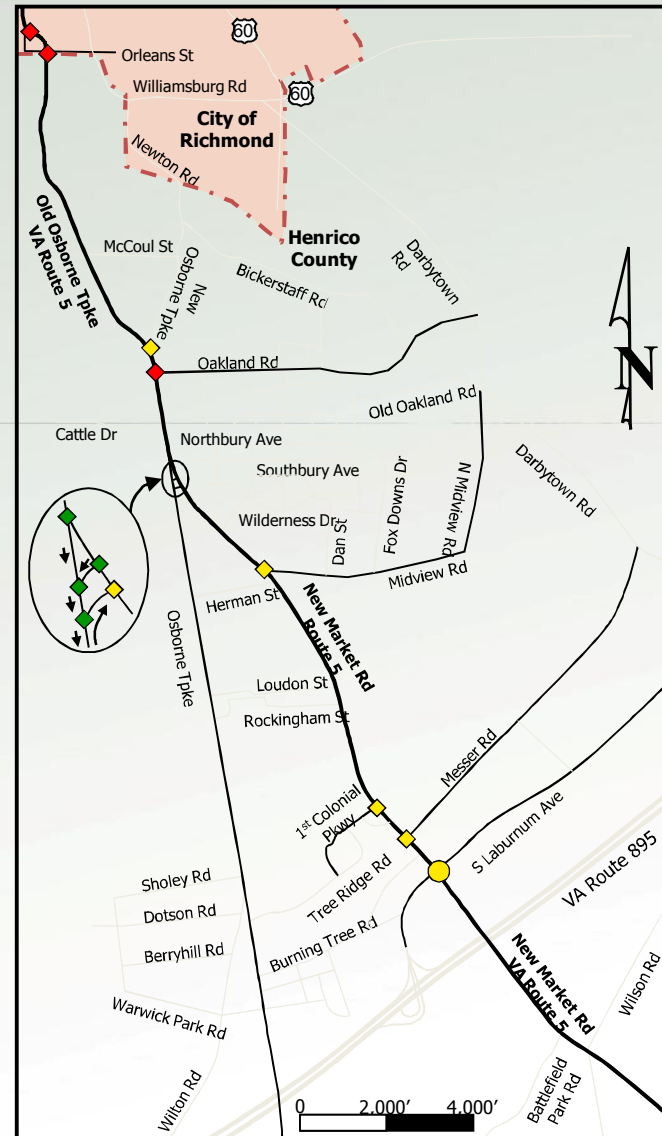
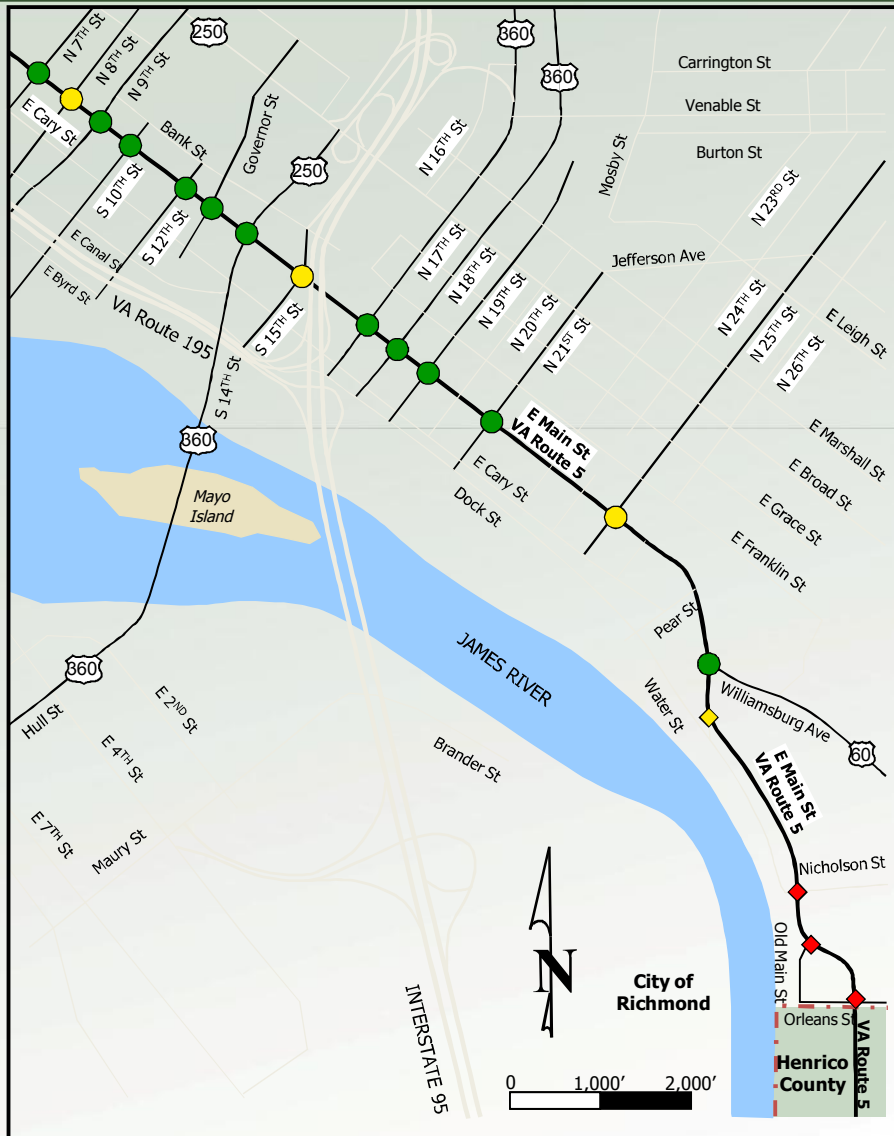
Existing AM Peak Hour Levels of Service





ROUTE 5 CORRIDOR STUDY

Existing PM Peak Hour Levels of Service



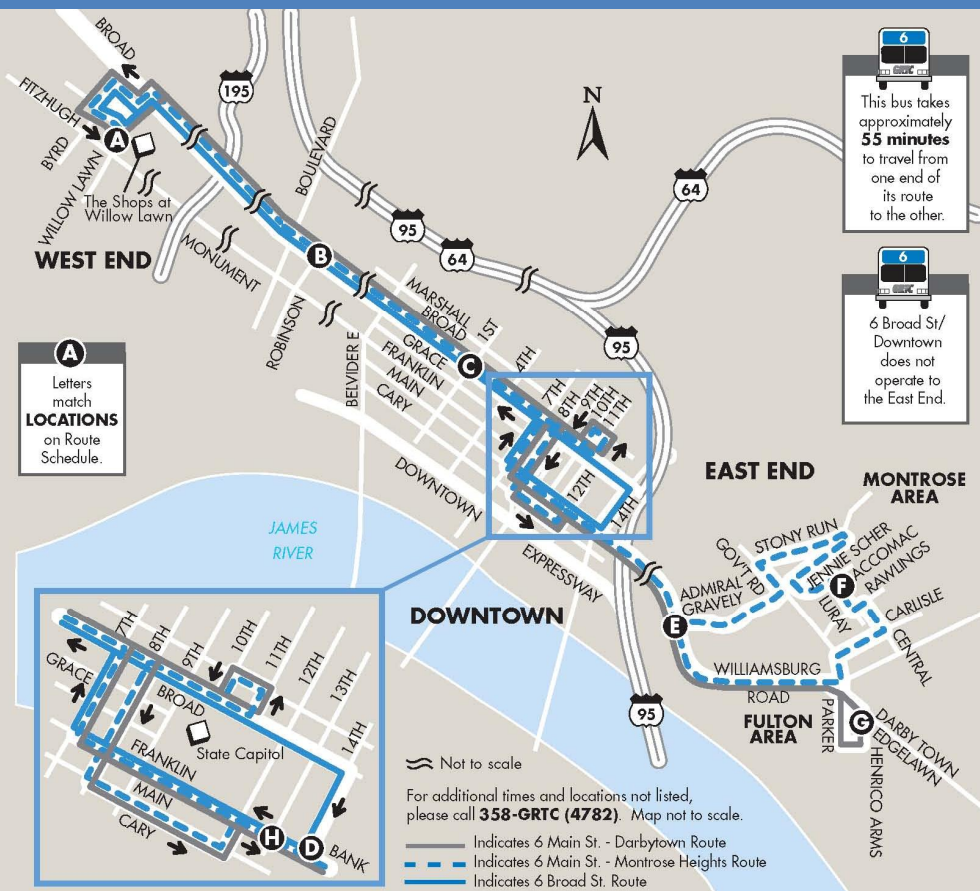


ROUTE 5 CORRIDOR STUDY

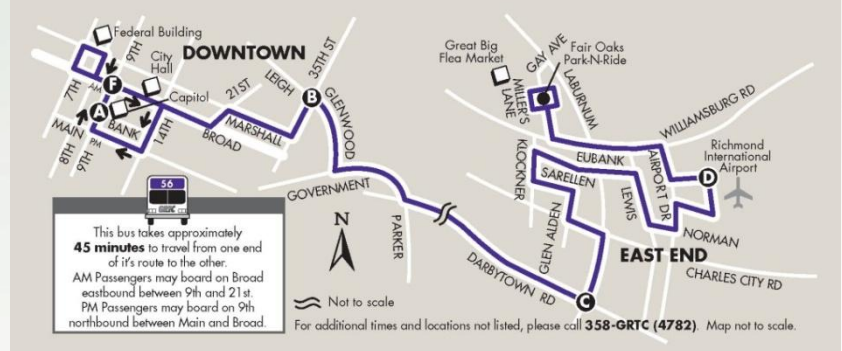
GRTC Transit System Routes



Route 6 – Broad Street/Main Street



Route 56 – South Laburnum





ROUTE 5 CORRIDOR STUDY

We're here to listen to you...

- **Issues** - What is working and what isn't?
- **Ideas** - What do you like and what would you prefer to see changed?
- **Interest** - What is your interest in the corridor?
- **Vision** - What should the Route 5 corridor look like in 5, 10, 20, and 30 years?
- **Priorities** - What would you seek to accomplish first?



ROUTE 5 CORRIDOR STUDY

Rules

1. Be an active participant – ask questions and provide input
2. Identify existing issues and possible areas for improvement
3. Think creatively and big – this plan is for today, tomorrow, and also for 30 years from now



ROUTE 5 CORRIDOR STUDY

How the Stations Work

- Large aerials and zoning maps (3 stations)
 - **Yellow dot** = a safety or congestion issue
 - **Blue dot** = desired area for a pedestrian, bicycle or transit
- Visual preference survey boards (2 stations)
 - **Green dot** = something you like
 - **Red dot** = something you don't like
- Large notepads to capture thoughts/ideas/etc.
- Questionnaire (www.Route5Corridor.com)



ROUTE 5 CORRIDOR STUDY

Stay Involved!

- Please make sure you have **signed in** and provided contact information
- **Turn-in** your filled-out questionnaires
- Visit www.Route5Corridor.com in the coming months for...
 - Summaries from meetings
 - Project information and updates
 - Future meeting dates
 - Contact information